

SYMPARE

Methyl Ester Sulphonates

Curated for Personal Care

SYMPARE

Methyl Ester Sulphonates (MES)

SYMPARE MES is a sulphate-free anionic surfactant naturally made from plant source for use in the personal care categories. SYMPARE MES is listed in the CleanGredients database as it meets the EPA's Safer Choice Standard. It is a sustainable alternative to petroleum-based surfactants in cleansing product formulations where product's low irritation and mildness are benefits.

INCI

- Sodium Methyl 2-Sulfopalmitate/Stearate
- Sodium Methyl Palmitate Sulfonate
- Sodium Methyl Stearate Sulfonate



End-user Applications



Shampoo



Baby Care



Hand Wash



Facial Wash



Body Bath

Be assured by SYMPARE MES



* SYMPARE MES has been reviewed by EPA's Safer Choice program and qualified for use in Safer Choice-certified products.

Our Brand in the Global Arena





SYMPARE

Emollient-Enhanced Hair Shampoo

The Ideal Balance of Performance, Mildness & Sustainability

SYMPARE MES delivers effective cleansing with gentle care. Many surfactants focus on either mildness or effectiveness, but **SYMPARE MES** excels at both. It's the ideal choice for clean beauty formulations, sourced from renewable, biodegradable plant sources. Whether creating shampoos, body washes, or baby care products, **SYMPARE MES** ensures a gentle yet thorough cleanse every time.

SYMPARE MES improves combability by up to 40% in shampoo formulations, making hair easier to style and enhancing hair elasticity for better shaping.

Pleasant &
Long-lasting
Fragrance

Clean Effectively

Rich & Creamy Lather

Soft, Smooth &
Manageable Hair

Comfort Scalp



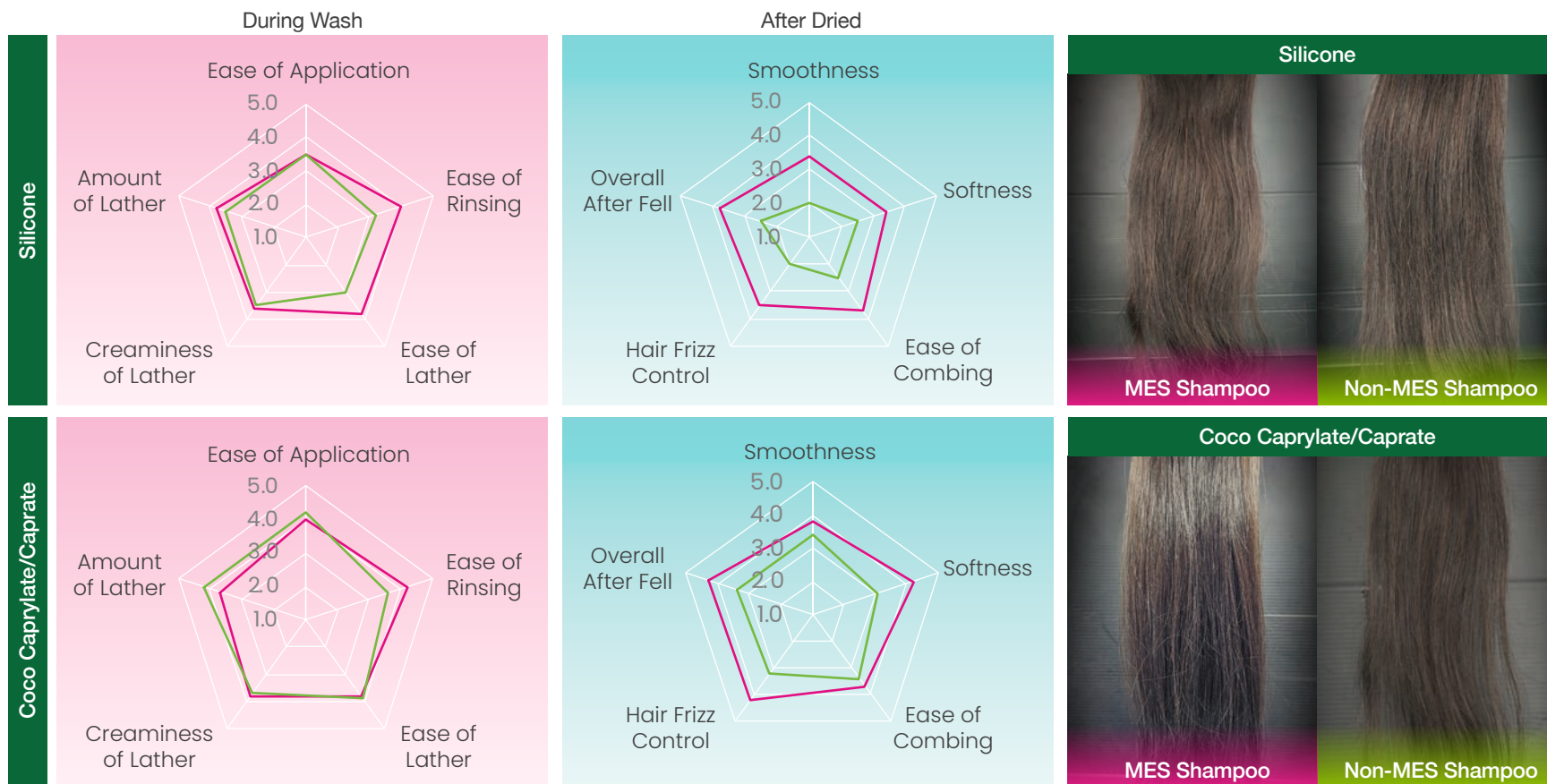


SYMPARE

Performance Backed by Science

SYMPARE MES outperforms alternatives in key performance metrics, delivering superior cleaning, enhanced hair softness, and improved manageability.

— MES Shampoo — Non-MES Shampoo



A larger pentagon indicates better performance across key metrics

A consumer test was conducted with 20 untrained panellists, aged 18 to 50, with normal, oily, combination, and dry hair types, and various hair lengths, using a single-blind method to evaluate the performance of the hair shampoo formulated with SYMPARE MES.



Hand Wash

SYMPARE Foaming Hand Wash

Gentle Care, Luxurious Hand Cleaning

SYMPARE MES is crafted to provide an effective yet gentle hand wash. It forms a rich, dense foam that removes dirt and impurities while maintaining the skin's natural moisture. As a sulphate-free, eco-friendly ingredient, **SYMPARE MES** helps keep hands feeling soft, smooth, and nourished, without the drying effects commonly found in traditional soaps. Enjoy a refreshing clean that lasts long after you rinse.

Intense & Dense Foam

Mild Cleansing

Pleasant & Long-lasting
Fragrance

Gentle & Non-drying

Soft & Smooth
Hands

Easy to Rinse
Without Sticky or
Filmy Residue





SYMPARE

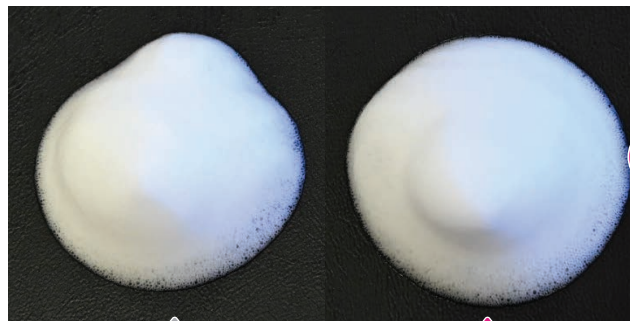
Foam Performance

SYMPARE MES produces rich and even foam with texture and density that is comparable with market sample both at the initial stage and after 5 minutes.

Consumer Perception

SYMPARE MES stands out with its rich, creamy foam, gentle yet effective cleansing action, and refreshing after-wash feel—earning consumer praise and performing on par with leading market sample.

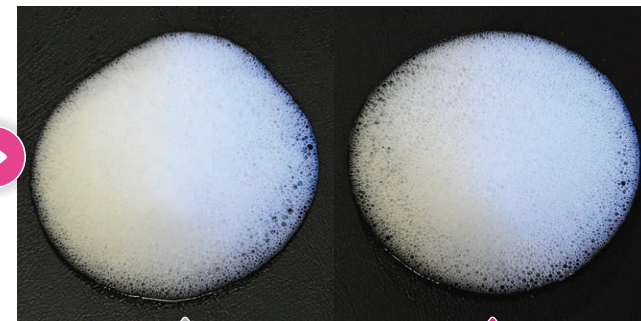
Immediately after dispensing



Market sample

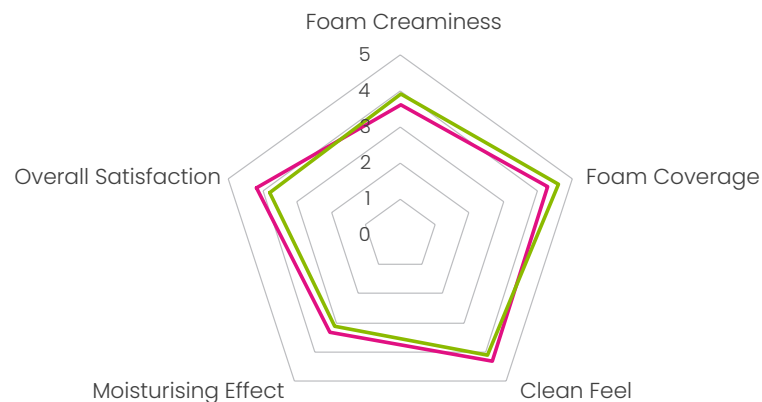
**SYMPARE MES
Foaming Hand Wash**

Foam stability after 5 minutes



Market sample

**SYMPARE MES
Foaming Hand Wash**



SYMPARE MES Foaming Hand Wash

Leading Market Sample

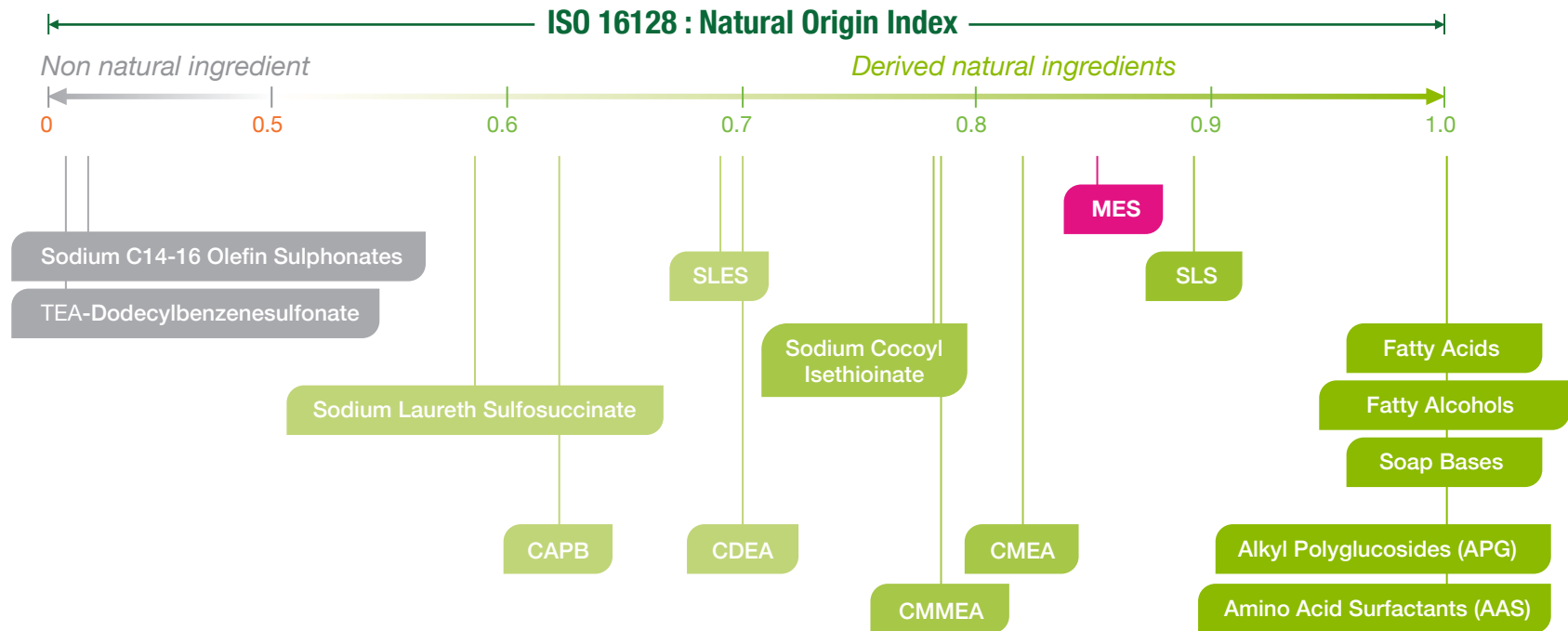
A larger pentagon indicates better performance across key metrics

A consumer test was conducted with 10 untrained panelists, aged 18 to 50, using a single-blind method to evaluate the performance of the foaming hand wash formulated with SYMPARE MES.

SYMPARE

Natural Ingredient

Many of today's consumers are demanding greater transparency in the products they purchase, including knowing where their products come from and what their ingredients are. SYMPARE MES contains more than 50% of natural raw materials and is defined as derived natural ingredient according to ISO 16128. SYMPARE MES is a suitable alternative ingredient for the "natural" trend in the personal care industry. SYMPARE MES is recommended for high-growth natural consumer product categories such as baby care, personal care, and cosmetics transitioned their offerings to cater to this new generation of consumers.



SYMPARE MES

The right balance between product performance and naturality

SYMPARE

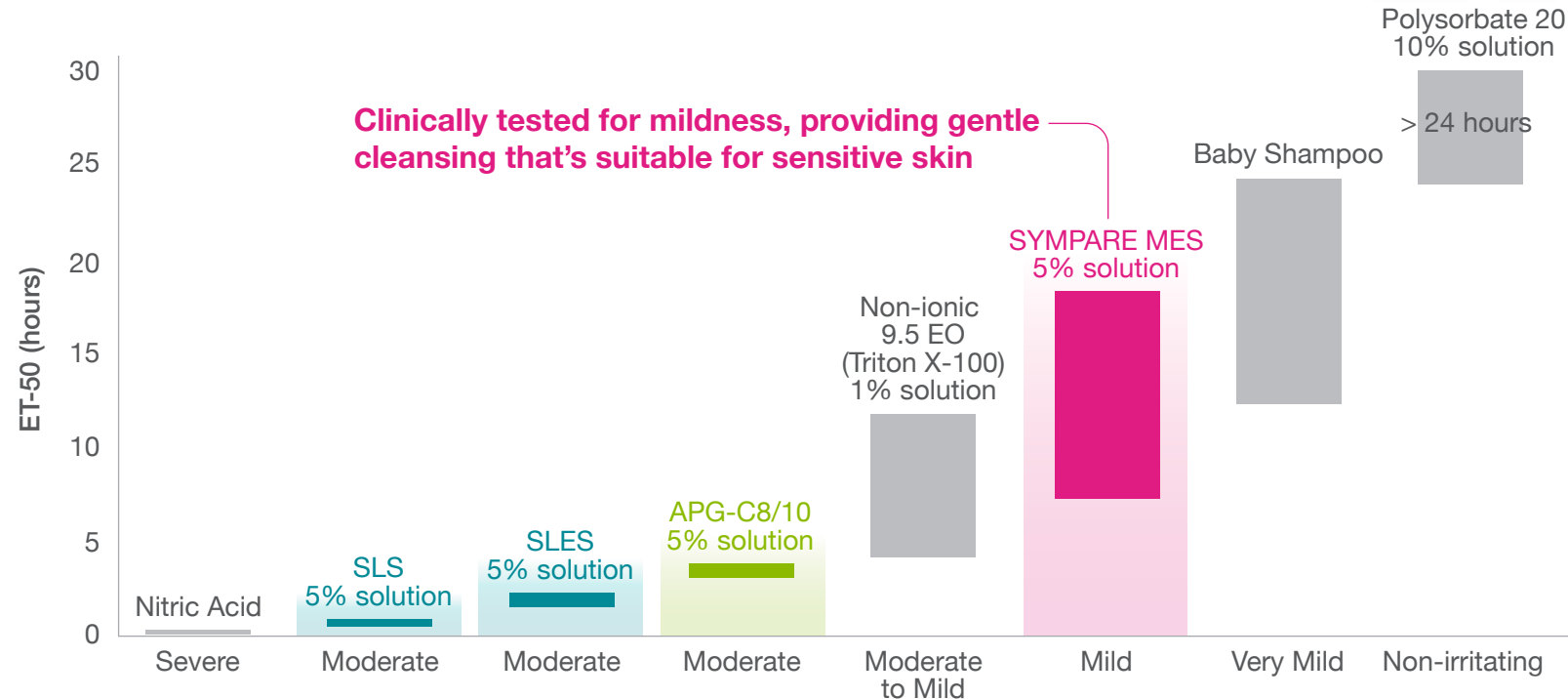
Mild to the Skin

Mildness to the skin is another key benefit that SYMPARE MES needs to deliver to consumers. Mildness is most commonly associated with the absence of skin irritation such as redness, heat, swelling and pain. SYMPARE MES is evaluated with Epiderm Skin Irritation Test utilises the 3D *in vitro* reconstructed human epidermal (RHE) model. SYMPARE MES is categorised as MILD comparing to the selected benchmarks.



Irritancy Potential

In vitro EpiDerm MTT ET-50 Assay : Benchmark Groupings & ET-50 Values



*In vitro risk assessment assay is based on the effective time at which a material causes a 50% reduction in tissue viability (ET50)

SYMPARE

Designed to Meet the Evolving Market Trends

SYMPARE MES offers an ideal solution for formulating ultra-low impurity products, effectively meeting new impurity limits without compromising on performance.

Compliant with Regulatory Expectations

Supports brands in meeting clean beauty standards.

1,4-Dioxane-Free

Ensure safety and regulatory compliance by eliminating 1,4-dioxane, a potential carcinogen.

Sulphate-Free

No harsh sulphates, making it gentler on skin and scalp.

EO-Free

Eliminates ethoxylated ingredients to reduce the risk of contamination.

Mild and Effective

Gentle on skin while delivering excellent cleansing performance.

Plant-derived and Biodegradable

A sustainable and environmentally friendly surfactant choice.

Plant-Derived

Biodegradable

Sulphate-Free

Dioxane-Free

Ethoxylate-Free



Malaysia
KLK OLEO Corporate Office
T : +603 7809 8833

China Sales Office
KLK OLEO (Shanghai) Co., Ltd.
T : +86 21 3636 1130

Europe Sales Office
KLK Tensachem S.A.
T : +32 4 338 93 29

Americas Sales Office
KLK OLEO Americas Inc.
T : +1 516 584 6268

India Sales Office
KLK OLEO India Pvt Ltd
T : +91 98199 78 060

homecare@klkoleo.com
www.klkoleo.com

Visit us at
NYSCC Suppliers Day 2025
Cosmetics & Home Care Ingredients (CHCI) 2025
in-cosmetics Asia 2025

Disclaimer

SYMPARE is a registered trademark of KLK OLEO. All information provided herein is true and accurate to the best of our knowledge, based on information available to us as at the date hereof. Recommendations or suggestions as to the use of the Products are given in good faith but it is for a buyer to be satisfied (by trial processing if necessary) as to the fitness or suitability of the Products for any particular purpose. No warranty is given as to their fitness for any particular purpose.

KLK OLEO is not aware of any competing claims to the patent/intellectual property rights of the Products but accepts no liability in relation to any disputes or other claims whatsoever in respect thereof. The buyer needs to satisfy itself on all requirements on local product safety, consumer and health legislation and KLK OLEO accepts no responsibility in this regard.

All rights reserved. No part of this publication may be reproduced, stored in a retrieval system, published or transmitted, in any form or by any means, without the prior written permission of KLK OLEO.