

# Blue Ingredients

*Trend Book*

---

**SEPPIC**

Ingredients that inspire

# | EDITO

*The sea is a source of beauty  
that has inspired for many years.*

*As a supplier of raw materials,  
Seppic offers a range of ingredients from  
the marine world called Blue Ingredients.  
These ingredients are not only limited to brands  
whose DNA is rooted in the marine universe  
but also to all others willing to discover it.*

*In this sense, this trend book is divided  
into 3 archetypes that represent the major trends  
in the cosmetics industry. It invites to explore  
marketing concepts around Blue Ingredients  
with illustrative and inspirational formulas.*

*It's an inspiring toolbox for  
creative and technical teams working  
in cosmetic products development.*

*...Take a dip into the deep!*

## Summary

*About Blue Ingredients, p.02*  
*Marine Treasures, p.04*

### THE WELLNESS "SEA-KER", p.06

<i>Archetype</i>	<i>p.07</i>
<i>Sea Bathing</i>	<i>p.08</i>
<i>Vitamin Seaweed</i>	<i>p.12</i>
<i>Sea Vegetable Garden</i>	<i>p.16</i>

### THE OCEAN LOVER, p.20

<i>Archetype</i>	<i>p.21</i>
<i>Patriotic Blue</i>	<i>p.22</i>
<i>Neo-ecology</i>	<i>p.26</i>

### THE SCIENTIFIC DIVER, p.30

<i>Archetype</i>	<i>p.31</i>
<i>Underwater Fantasia</i>	<i>p.32</i>
<i>Futura Seaweed</i>	<i>p.36</i>

*Index, p.40*

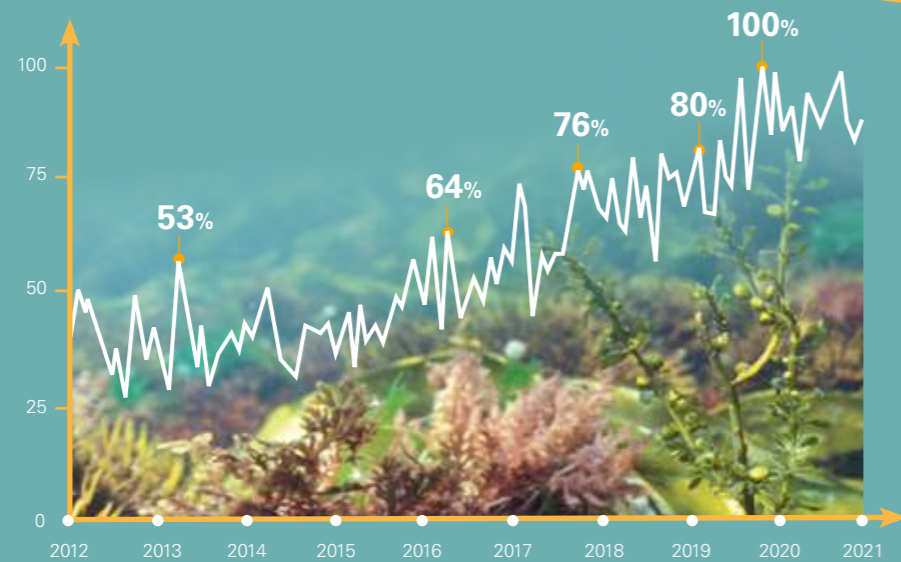
# About Blue Ingredients

Blue ingredients are cosmetic ingredients obtained from marine and maritime resources: seaweeds, seawater, salt, maritime plants.

Blue ingredients are continuously used in various cosmetics products, highlighting the diversity of their benefits.

## Interest in Blue Ingredients over the past 10 years <sup>(1)</sup>

GOOGLE SEARCHES FOR ALGAE IN BEAUTY AND FITNESS PRODUCTS IN THE WORLD



A **GROWING & CONTINUOUS** CONSUMER INTEREST in Blue Ingredients over the past 10 years

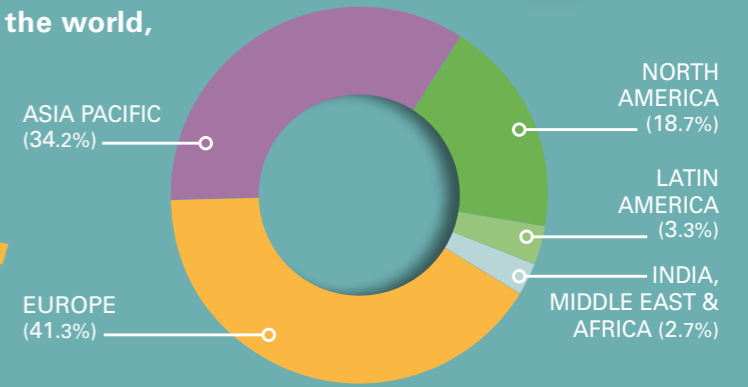
Sources: (1) Google searches between 2012 and 2021 worldwide by Google Trends / (2) Data from Mintel GNPD

## Uses of Blue Ingredients in cosmetics <sup>(2)</sup>



In 2021, Blue Ingredients are used in cosmetic products all over the world, especially in Europe.

In 2021, **12.63%** of new cosmetic launches contain at least 1 Blue Ingredient



In 2021, Blue Ingredients are mainly used in skin care, but not only:



**SKIN CARE PRODUCTS**  
65.3%



**HAIR CARE PRODUCTS**  
13.1%



**SOAP & BATH PRODUCTS**  
13.1%



**COLOUR COSMETICS PRODUCTS**  
7.5%

Blue Ingredients are the subject of many efficacy studies, resulting in numerous patents:

Between 2018 & 2019, **15%** of ACTIVE PATENT PUBLICATIONS were related to Blue Ingredients

**3x MORE** than the 10 PREVIOUS YEARS

The **GROWTH** of BLUE INGREDIENTS is set TO CONTINUE, especially in Skin Care

# Marine treasures

The ocean holds countless treasures for cosmetics, not only in its depths but also on the foreshore & coastline offering multiple benefits for the body.

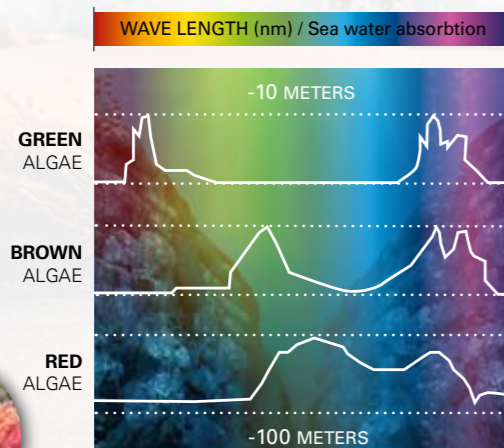
These treasures are full of nutrients, with an incredible biological richness that are perfectly compatible with those of our skin. From this marine world, 3 types of treasures can be found: blue, green & white golds.

## Seaweeds: the Blue Gold

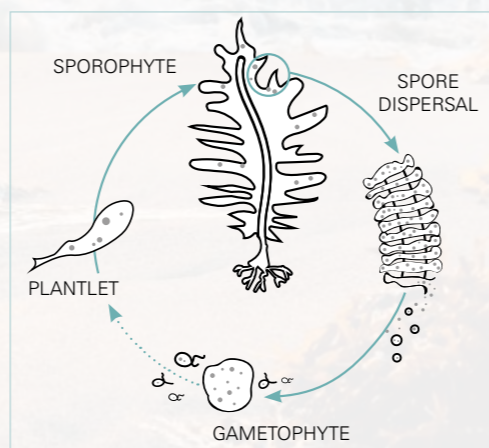
### Seaweeds include a wide range of microalgae & macroalgae

- **3 main families of seaweeds, distinct by colour: green, red or brown algae.** The **colour is due to seaweeds pigment content**, such as chlorophyll, carotenoids or phyco-biliproteins.
- **Some seaweeds can be very undemanding and thrive in stressful environments.** **Seaweeds cope with many variations:** alternating periods of immersion and emersion, strong UV exposure, wave movements, strong variation of salinity, desiccation, etc.
- **Seaweeds are also distinct by their size.** **Microalgae** are microscopic seaweeds invisible to the naked eye. They are typically unicellular species. **Macroalgae** are visible to naked eye, they are pluricellular and their size can vary until meters long. They generally live fixed to a support thanks to holdfast.
- **Some species of macroalgae have a particular reproductive cycle consisting of 2 distinct parts.** The step of **spore germination** gives a gametophyte, which produces male and female cells. The **latter after fertilization** gives a plantlet which evolves into a sporophyte and produces spores to start the cycle again.

### Seaweeds repartition in marine depths



### Macroalgae reproductive cycle



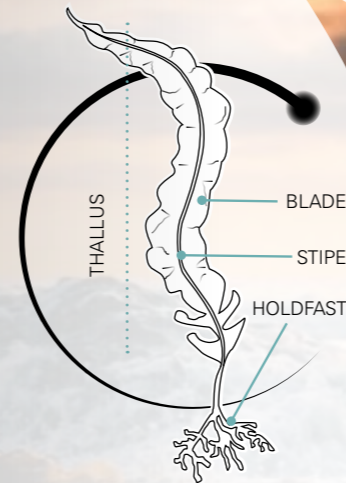
## Maritime plants: the Green Gold

### Maritime plants include a large number of species growing on the coastline

- **Maritime plants are halophytes.** The soil and atmosphere of the coastline is particularly **salty**. The large majority of plant species are glycophytes and are fairly easily damaged by salinity. **Only 2% of plants are halophytes.** They naturally grow in a saline, rocky or sandy and windy environment thanks to hairs on the roots that **absorb water and mineral salts**.
- **Some maritime plants are precious** and their **harvest is regulated** or not authorized at all to help protect them.

*A real source of inspiration at the service of beauty!*

### Macroalgae anatomy



*If more than 30,000 species of macroalgae have been identified worldwide, only 50 of them are used in cosmetics for their amazing skin care properties.*

*The world of algae has not yet revealed all its secrets!*

## Salt: the White Gold

### Seawater is a rich source of salts

Seawater is often considered as **marine plasma**, with **great benefits for the body**.

*Did you know?*

- **A 15-minute bath in seawater is beneficial.** It helps to capture certain ions that will cross the skin barrier and reach the blood capillaries to be distributed to the various tissues.
- **Indeed, seawater is loaded with salts, dissolved gases and suspended solids.** It contains a very rich variety of both flora and fauna.
- **In particular, the mean seawater salt concentration equals 35g/kg and is very rich in ions:** sodium, magnesium, calcium, potassium, strontium, chloride, sulfate, bicarbonate, fluoride, etc.

# The wellness

## "SEA-KER"

Archetype..... p.07  
SEA BATHING ..... p.08  
VITAMIN SEA ..... p.12  
SEA VEGETABLE GARDEN ..... p.16



### Archetype

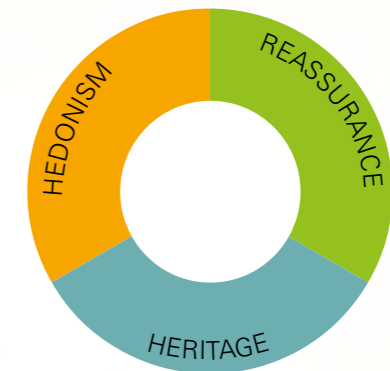
*Driven by the major trend of healthy living, meaning the reconnection with oneself, combining self-realization and well-being.*

### PROFILE

Aspiration to a **hedonistic** lifestyle made of essential pleasures for a physical and mental well-being.

Interested in **ancestral and traditional rituals** that have endured over time.

**Essentialist consumption** and concerned about its impact on health.



### BEAUTY MOTIVATIONS



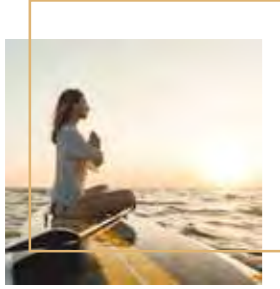
- HOLISTIC APPROACH
- BENEFICIAL BEAUTY
- RITUALISTIC ROUTINE



- SAFE AND NON-CONTROVERSIAL INGREDIENTS
- PLAYFUL TEXTURES

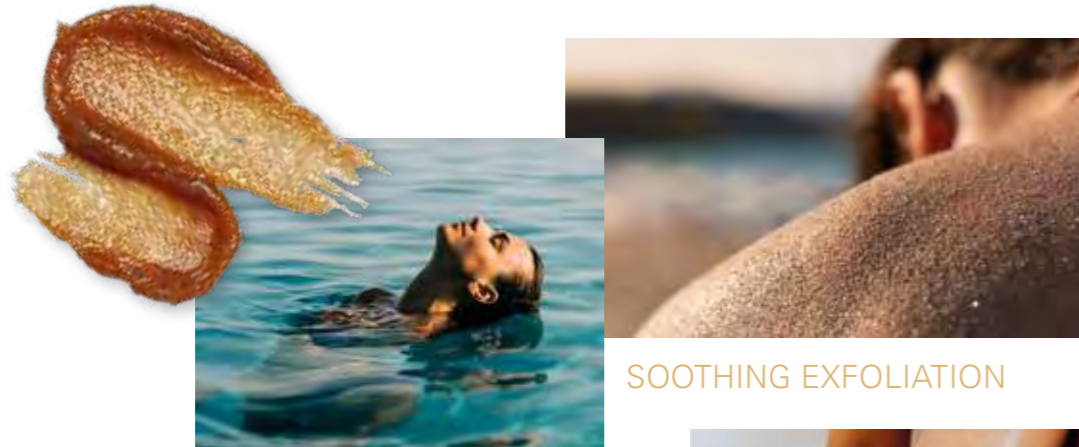
*With benefits proven by many traditional uses over time and rhyming with relaxing moments, Blue Ingredients are a pledge of wellness beauty.*

# Sea Bathing

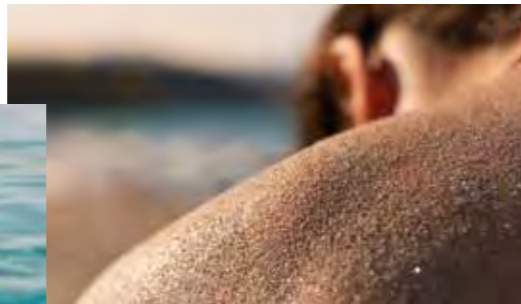


Since the dawn of time, marine elements have been considered as a resource of choice for health and wellness. Indeed, Egyptian, Greek and Roman populations already used the healing, relaxing and revitalizing properties of seawater and salt.

In a space where wellness takes an increasing importance, this concept invites to revisit ancient rituals around the ocean's elements.



THALASSOTHERAPY



SOOTHING EXFOLIATION



SPA AT HOME



- Reintroduce & modernize millenary rituals around ocean's elements
- Reinvest "bath care" as a well-being moment
- Bring crude elements from oceans to cosmetics
- Focus on fluid textures to be massaged into the skin as oil or scrub

## RELAXATION

### HOLISTIC INTERLUDE



SEA SALT



POWER OF HALOTHERAPY

## I BLOW OFF STEAM SCRUB

### MICRO ALGUE 80

Is a **natural fine powder** composed of **silica skeletons of diatoms microalgae**. Its particle size is perfectly suitable for **scrubbing sensitive areas** (face).

It acts as an **exfoliant** thanks to its **diatoms**, which have a cylindrical structure, silicium content and that allow high liquid absorption.

————— Skin Care | Exfoliant, Soft-feel effect

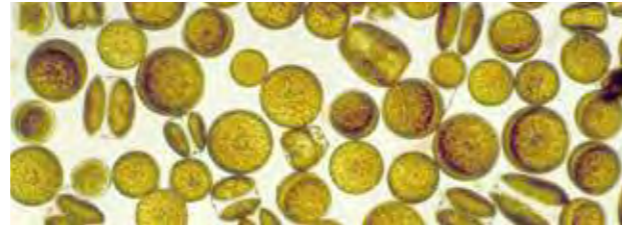
### SEL GRAIN™

Is **sea salt** collected in France.

Well-known and recognised over time, it is composed of **small crystals** suited to **scrub the body and the face**. In **massage applications**, it enhances well-being.

————— Skin Care | Exfoliant, Revitalizing

*A scrubbing face cream, inspired by ancestral steam bath & halotherapy rituals*



## I SHOWER OIL

### FLAKES OF CHONDRUS CRISPUS

Are **heterogeneous small pieces** (<5mm) of the **red seaweed Chondrus crispus** harvested in Brittany.

The particle size is suitable for **scrubbing the body**.

As marine raw material, the flakes bring an **appealing visual** either in bar soaps or in a liquid, reminding a **seaweed infusion**.

————— Skin Care | Exfoliant



*An oil-to-lotion "seaweed-infused" scrub, to reinvent bathtime & bring spa at home*

## I ANHYDROUS SCRUB

### GULF STREAM SEA WATER

Is **atomized seawater**, born from the warm **Gulf Stream** - the feeder vein of ocean - crossing the Atlantic ocean and collected in the **Bréhat Archipelago**.

Old source of well-being, this seawater is atomized and it's **30x more concentrated** than classic sea water in **minerals and oligoelements**.

Acts as a **marine nutritive reservoir**, with ocean minerals and oligoelements, first elements of life.

————— Skin Care | Remineralizing

*An exfoliating balm to be applied on wet skin before rinsing for a real moment of pleasure.*



Composition of the formula (ref.: US20127)

A	Aqua/Water	Up to 100%
	Glycerin	3.00%
	Benzyl Alcohol - Benzoic Acid - Dehydroacetic Acid - Tocopherol	1.00%
B	NaOH solution	Up to pH= 5-5.5
C	<b>MONTANOV™ L</b>	<b>3.00%</b>
	<b>EMOSMART™ V21</b>	<b>8.00%</b>
	Ethylhexyl Polyhydroxystearate	1.50%
	<b>SEPIMAX ZEN™</b>	<b>1.50%</b>
	<b>SOLAGUM™ AX</b>	<b>0.50%</b>
D	<b>MICRO ALGUE 80</b>	<b>10.00%</b>
	<b>SEL GRAIN™</b>	<b>10.00%</b>
	Parfum/Fragrance	0.20%



**Texture** | An oil-in-water emulsion, with freshness and leaving a soft finish on skin.

- **SOLAGUM™ AX** and **MONTANOV™ L** allow to stabilize the emulsion.
- **SEPIMAX ZEN™** also stabilizes the emulsion and suspends the particles.
- **EMOSMART™ V21** brings a fresh texture with a soft finish and a matt veil.

Composition of the formula (ref.: EU07491)

A	Prunus Amygdalus Dulcis Oil	64.60%
	<b>EMOGREEN™ L19</b>	<b>15.00%</b>
	<b>LANOL 99</b>	<b>10.00%</b>
	<b>LANOL 14M</b>	<b>5.00%</b>
B	<b>FLAKES OF CHONDRUS CRISPUS</b>	<b>4.30%</b>
	Tocopherol	0.10%
	Parfum/Fragrance	1.00%



**Texture** | A transformative oil-to-lotion with suspended pieces of seaweeds, to be applied at the end of the shower and **easily rinsable**, that leaves the skin soft and non-oily.

- **EMOGREEN™ L19** is a bio-sourced and biodegradable emollient that efficiently replaces silicone oils. Combined with sweet almond oil, it lightens its oily texture while giving a fresh and gliding touch.
- **LANOL** ingredients easily emulsify oil in a light lotion, support the rinsability of the formula and contribute to the pleasant sensoriality.

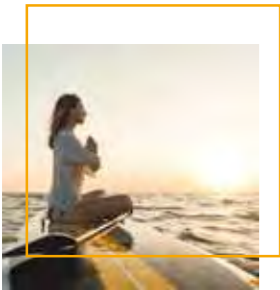
Composition of the formula (ref.: US20089)

A	Glycerin	70.20%
B	<b>MONTANOV™ 82</b>	<b>1.00%</b>
	<b>EMOGREEN™ L15</b>	<b>4.00%</b>
C	<b>FLUIDANOV™ 20X</b>	<b>1.00%</b>
	<b>SEPIMAX ZEN™</b>	<b>1.50%</b>
D	Glycolic Acid	1.00%
	Lactic Acid	0.50%
E	Sodium Hydroxide	0.50%
F	Cocos Nucifera Oil	1.00%
	<b>SEPICALM™ VG WP</b>	<b>2.00%</b>
	<b>CODIAVELANE™ BG PF</b>	<b>2.00%</b>
	Parfum/Fragrance	0.30%
	<b>SEL GRAIN™</b>	<b>7.00%</b>
	<b>GULF STREAM SEA WATER</b>	<b>2.00%</b>
G	<b>FLAKES OF CHONDRUS CRISPUS</b>	<b>6.00%</b>



**Texture** | An exfoliating gel composed of **salt and algae** with a honey touch, as an enveloping, protective and nourishing veil.

- **EMOGREEN™ L15** is an easily biodegradable alternative to volatile silicone oils that provides a smooth finish on the skin.
- **SEPIMAX ZEN™** is a versatile polymer that helps stabilize the formula.



# Vitamin Seaweed

Widely consumed in some Asian countries and studied in many industrial fields, seaweeds are interesting raw materials for health and beauty. Sharing some similarities with terrestrial plants, seaweeds hold potent metabolites.

As consumers look more and more for new natural and reliable ingredients, this concept invites to consider seaweeds and their metabolites.

## INVIGORATING



## ALGAL POWER



## BENEFICIAL WAVES



## SEA PEPS

## WATERY INFUSION



## MELTING FRESHNESS



- In the manner of terrestrial plants, explore the invigorating powers of seaweeds and their metabolites
- Investigate seaweeds recognized in different fields or cultures for their health benefits
- Bet on claims centered on skin health: protection, reinforcement, detoxification
- Focus on light, fresh and transformative textures: jelly, cream gel, gel-to-water



## I MARINE BODY SERUM

*A detoxifying and firming body light cream that melts onto skin to overwhelm the body with a wave of freshness*

### SCULPTOSANE™

Is an extract of *Scenedesmus obliquus* green microalga, native to the desert and widely investigated in food, medicine and cosmetic fields.

It has a **detoxifying** and **cell energizing** activity.

It **improves skin firmness** and **elasticity**.

Body care | Firming



## I FRESH WATER DROP

*A glossy body lotion to cool down rapidly the skin while moisturizing, soothing and reinforcing it*

### ANTILEUKINE 6™

Is an extract of the *Laminaria ochroleuca* brown seaweed also known as the *Golden seaweed*.


The *Golden seaweed* is exposed to **strong environmental stress**, leading to the **secretion of different metabolites**. It is composed of **loliolide**, a molecule found in algae and plants with antioxidant and protective properties.

This ingredient **reinforces skin structure** and **protects against various external stress**. It immediately **soothes** and **moisturizes** the skin.

Skin care | Soothing, Moisturizing



Composition of the formula (ref.: EU07538)	A	Aqua/Water	Up to 100%	
		<b>HYDRALIXIR™ LD</b>	<b>5.00%</b>	
		C.I. 42053	0.05%	
		C.I. 15985	0.05%	
	-----			
	B	<b>EMOGREEN™ L15</b>	<b>5.00%</b>	
		Caprylic/Capric Triglyceride	5.00%	
		<b>SEPINOV™ EMT 10</b>	<b>0.80%</b>	
		<b>SEPIMAX ZEN™</b>	<b>0.30%</b>	
	-----			
	C	Preservative	1.00%	
		Phenylpropanol - Propanediol - Caprylyl Glycol - Tocopherol	0.50%	
	Parfum/Fragrance	0.10%		
	<b>SCULPTOSANE™</b>	<b>1.00%</b>		




**SAMPLES available**

**Texture** | A fresh cream gel, that becomes really aqueous in contact with skin and quickly dries.

- **SEPINOV™ EMT 10** allows to create and stabilize the cream gel while bringing a satin, fresh and gliding sensation.

Composition of the formula (ref.: EU07683)	A	Aqua/Water	Up to 100%	
	-----			
	B	<b>EMOGREEN™ L19</b>	<b>10.00%</b>	
		<b>ANTILEUKINE 6™</b>	<b>2.00%</b>	
		<b>EPHEMER™</b>	<b>1.00%</b>	
		Parfum/Fragrance	0.20%	
		<b>SEPINOV™ WEO</b>	<b>0.70%</b>	
	-----			
	C	Preservative	1.00%	
	-----			
	D	FD& C Blue#1 Solution 1%	0.06%	
		FD& C Yellow#5 Solution 1.0%	0.02%	



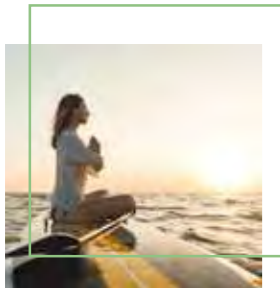
**SAMPLES available**

**Texture** | A glossy cream gel, with a quick-break effect turning into a watery fluid.

- **SEPINOV™ WEO** allows the quick-break effect and imparts a satiny and fresh skin feel.

Samples are available upon request. See contact details on the back cover.

# Sea Vegetable Garden



Marine coastline hosts many halophytic plants. Some of these plants used to be eaten in ancient times. Left out of the table, these plants are very close to vegetables.

In a quest of essentialism and authenticity, this concept invites to a back-to-the-roots and put back into the spotlight old maritime vegetable plants.

## VEGETAL MACERATES



## ALCHEMIST'S GARDEN



## ARTISANAL

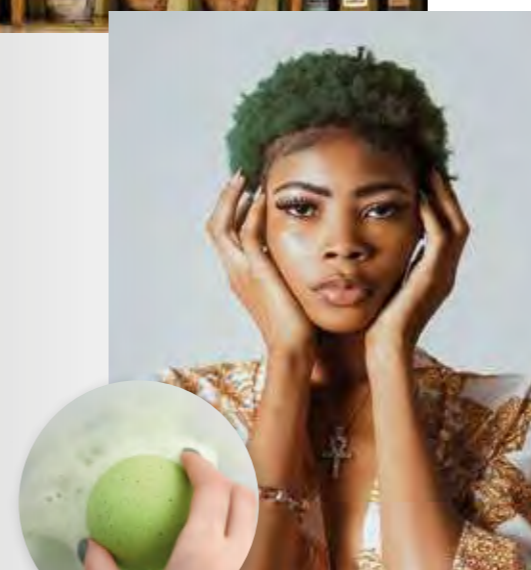


## FOOD-INSPIRED



- Invest the hair and scalp care, with a sophisticated artisanal universe
- Take inspiration from plant-based diets and select forgotten sea vegetables, with potent benefits
- Create ritualization of beauty routine or kits with sophisticated DIY
- Focus on rich, unctuous and oily textures, recalling nourishing benefits

## SCALP IS TO THE HAIR WHAT ROOTS ARE TO PLANTS



## REVITALIZING



## I CONDITIONING MASK WITH VEGETABLE OILS

### INULA HC

Is an **extract** of the **Golden samphire**, adapted to dry hair and scalp.

It offers benefits for the hair fiber: **shine, smoothness, hair lipidic barrier reinforcement and better hair colour uptake** (tested in colouring shampoo).

At the same time, it demonstrates antioxidant, energizing effects and lipid replenishing properties for the scalp.

Native to Western Europe and the Mediterranean region, the **young shoots, leaves & flower buds** of the plant are **edible**. It used to be pickled or cooked, most often used as a relish.

Hair care | Shine, Smoothing

An unctuous and rich conditioning mask enriched with several vegetable oils that hydrates and smoothes hair



## I PRECIOUS HAIR OIL

### SEA SATIN™

Is an **antioxidant extract** of the **Sea beet**, also called the **Wild spinach**. It demonstrates natural conditioning benefits for hair such as **shine** and **volume**.

**Very ancient vegetable**, the leaves of the Sea beet have been eaten since prehistoric times.

Ancestor of the sugar beet or the chard, nowadays, its **genetic resource is considered precious**, containing more resistance genes to stressful conditions like challenging climate conditions or biological stress.

Hair care | Shine, Volume

A 99.6%\* of natural ingredients oil to mix and match with a hair serum or mask, enriched with oils of precious resources



\*Naturality profile according to ISO 16128 norm

Composition of the formula (ref.: EU07448A)

A	Aqua/Water	Up to 100%
	Glycerin	3.00%
B	<b>LANOL 2681</b>	<b>3.00%</b>
	Caprylic/Capric Triglycerides	2.00%
	Butyrospermum Parkii	1.00%
	Simmondsia Chinensis (Jojoba) Seed Oil	3.20%
	Glyceryl Stearate	2.00%
C	<b>MONTANOV™ 68 MB</b>	<b>3.00%</b>
	<b>EMOGREEN™ L19</b>	<b>5.00%</b>
	Distearoylethyl Dimonium Chloride - Cetearyl Alcohol	1.00%
	Tocopherol	0.05%
D	<b>SOLAGUM™ TARA</b>	<b>0.80%</b>
E	<b>AQUAXYL™</b>	<b>1.50%</b>
	<b>INULA HC</b>	<b>2.00%</b>
	Glycerin - Aqua - Aloe Barbadensis Leaf Juice	1.00%
	Hydrolat Oranger Fleur	18.00%
	Parfum/Fragrance	0.20%
	Benzyl Alcohol - Benzoic Acid	1.00%
	Dehydroacetic Acid - Tocopherol	0.28%
	NaOH 6%	



SAMPLES available

**Texture** | An unctuous and rich oil-in-water emulsion, formulated with COSMOS approved ingredients.

- **SOLAGUM™ TARA** is a natural gum that texturizes and thickens the emulsion.
- **MONTANOV™ 68 MB** from vegetable origin, creates a rich and smooth texture and also supports scalp moisturization over time.
- **EMOGREEN™ L19**, a bio-sourced alternative to silicones oils, eases the product spreading and leaves hair soft and shiny.

Composition of the formula (ref.: EU07746)

A	<b>LANOL 2681</b>	<b>48.60%</b>
	<b>EMOGREEN™ HP 40</b>	<b>5.00%</b>
	Limnanthes Alba (Meadowfoam) Seed Oil	5.00%
	Cocos Nucifera	20.00%
	Simmondsia Chinensis Seed Oil	20.00%
	Parfum/Fragrance	0.20%
	Tocopherol	0.20%
	<b>SEA SATIN™</b>	<b>1.00%</b>



SAMPLES available

**Texture** | A non-greasy oil, leaving a velvety after-feel.

- **EMOGREEN™ HP 40** bio-sourced emollient, is a sustainable alternative to heavy silicones that brings comfort & curl definition to hair.

Samples are available upon request. See contact details on the back cover.

# The Ocean LOVER

Archetype ..... p.21  
 PATRIOTIC BLUE ..... p.22  
 NEO-ECOLOGY ..... p.26

## Archetype

*Driven by the major trend of better living, meaning the reconnection to others and to the planet, which reinvents the paths of innovation and creates purpose.*

## PROFILE

Committed to a **sustainable** and supportive lifestyle.

Driven by a **responsible consumption mindset**.

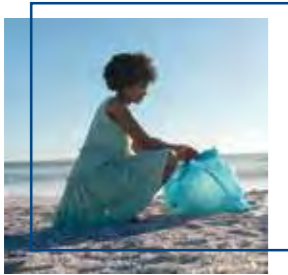
Aspiration to **honour its local patrimony** and **preserve** it.



## BEAUTY MOTIVATIONS

- SUPPORTIVE APPROACH
- CONSCIOUSLY-DESIGNED BEAUTY
- FRUGAL ROUTINE
- SUSTAINABLY- SOURCED INGREDIENTS
- MULTI-APPLICATION AND MULTI-BENEFITS PRODUCTS

*Symbol of the climate emergency challenges and of the sustainable management of environmental resources, Blue Ingredients are a pledge of conscious beauty.*



# Patriotic Blue

Marine and maritime landscapes host many treasures but still need to be preserved.

As consumers demand greater transparency from their purchases, this concept invites to honor local population and marine resources, with a focus on sustainability and traceability.

## TRACEABILITY



## LOCAL PRODUCERS



## TERROIR

## INSPIRING PLACES



## PRIDE



## HAND-PICKED

- Create beauty from richness and diversity of the Bréhat Archipelago
- Emphasize the local actions in the sourcing and the production of the cosmetic ingredients and cosmetic products
- Pick ingredients from seaweeds and maritime plants, responsibly and locally collected
- Bet on claims centered on the basic skin requirements
- Focus on minimalist and easy-to-use products while offering sensoriality



**80%**  
OF SEPPIC BLUE  
INGREDIENTS IS BASED  
ON ALGAE AND  
MARITIME PLANTS  
COLLECTED IN  
BRITTANY  
(FRANCE)

**100%**  
OF OUR SEAWEEDS  
COLLECTED IN BRITTANY  
ARE COMPLIANT  
WITH FRENCH LOCAL  
REGULATIONS OF  
HARVESTING

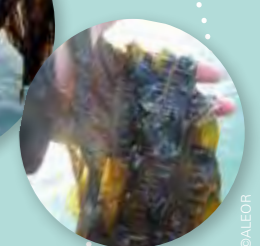
• Brittany is the home to an exceptional marine flora, with **over 800 species of algae** and **hundreds of maritime plants species**.

• A true "Underwater Amazon" as it hosts a variety of algae favored by the interplay of several factors such as the **purity and quality of its waters** and the **confluence of the Gulf Stream**.

## An approach that respects biodiversity and traceability in seaweed harvest

Seaweed harvest is regulated and controlled by regional committees, involving:

- An **annual licence** for seaweed harvesters, delivered according to a positive list of **authorized species**.
- A precise **reporting of the collected species**, referencing **harvesting areas** based on an official mapping and the **collected volumes**.
- **Good practices guidelines** of seaweed harvest.
  - An **annual follow up** of potential risks.
  - A lead on **social initiative in the field**.
  - A lead for the **defense of stakeholders's** interests.



## MINIMALIST

# Patriotic Blue / Inspiring formulas

## I MULTI-BENEFITS MARINE SERUM

### NATIVE ESSENCE™

Is an **oily extract** of *Crithmum maritimum*, also known as *Sea fennel*.

It offers a **global protection and oxygenation**, resulting in a **radiant skin**.

This halophytic plant grows in the salty and rocky soils of the Breton coast, thanks to its **particular composition in lipids**.

In Brittany, its **harvest is regulated** and occurs after its flowering in summer. It is **picked by hand**, from cultivation or from the wild, without fully cutting the plant and respecting the roots for renewal.

— Skin care | Radiance



A 98.6%\* of natural ingredients face serum with multi-benefits ingredients

Composition of the formula (ref.: EU07502)

A	Aqua/Water	Up to 100%
	Glycerin	2.00%
	Potassium Sorbate	0.10%
	Pentylene Glycol	3.00%
B	<b>ORAMIX™ CG 110</b>	<b>0.50%</b>
	<b>HYDRALIXIR™ LD</b>	<b>50.00%</b>
C	<b>SOLAGUM™ AX</b>	<b>1.50%</b>
	<b>EMOGREEN™ L19</b>	<b>5.00%</b>
D	<b>ANTILEUKINE 6™</b>	<b>2.00%</b>
	<b>NATIVE ESSENCE™</b>	<b>1.00%</b>
	Glycerin - Aqua - Aloe Barbadensis	1.00%
	Leaf Juice	0.20%
	Parfum/Fragrance	0.20%
	Tetrasodium Glutamate Diacetate	0.20%
E	Citric Acid	0.30%



**Texture | A fluid cream gel,** formulated with COSMOS approved ingredients.

- **SOLAGUM™ AX** is a combination of natural origin gums and efficiently stabilises the formula.
- **EMOGREEN™ L19** is a biodegradable emollient of plant origin. It promotes glide from the serum during application and leaves a soft, powdery finish on the face.

SAMPLES available

## I 1 SEAWEED, 2 SUSTAINABLE FORMULAS!

### CODIAVELANE™ BG PF

Is an **extract** of *Codium tomentosum*, a small green alga with a velvety appearance.

It **moisturizes, smoothes** and **makes the skin more comfortable**.

This seaweed binds to exposed rocks and grows in natural water cells within the infralittoral zone.

It is **sustainably harvested by hand** in Brittany. The harvest occurs **only in winter** when the seaweed is not covered by epiphyte organisms. Moreover, because of the regular storms in winter, **the harvest is also occasional**, making this resource precious.

— Skin care, Make up | Moisturizing



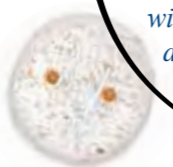
### I SUSTAINABLE MINIMALIST MILK

A 98.4%\* natural ingredients and minimalist milk, taking care of the skin and the planet!



### I TRANSPARENT FOUNDATION

A 98.1%\* natural ingredients and minimalist jelly foundation with capsules, to offer a fun and sustainable make-up routine!



Composition of the formula (ref.: EU07645)

A	Aqua/Water	Up to 100%
B	<b>MONTANOV™ 202</b>	<b>2.00%</b>
	<b>EMOGREEN™ L19</b>	<b>10.00%</b>
	<b>LANOL P</b>	<b>1.00%</b>
C	<b>SIMULGEL™ NS</b>	<b>1.00%</b>
D	<b>CODIAVELANE™ BG PF</b>	<b>2.00%</b>
	Preservative	1.00%
	NaOH 6%	Up to pH



**Texture | A fluid cream gel with a light and soft skin feel,** with **multi-functional ingredients** to guarantee **minimalism**.

- **MONTANOV™ 202** is an emulsifier derived from vegetable origin. It also hydrates the skin overtime
- **EMOGREEN™ L19** is a bio-sourced emollient. It leaves a comfortable afterfeel and allows to decrease the quantity of preservatives. It also improves the appearance of the skin: more hydrated, softer and smoother.

SAMPLES available

Composition of the formula (ref.: EU07554)

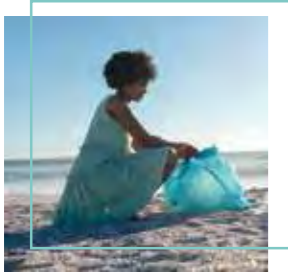
A	Aqua/Water	Up to 100%
B	<b>SEPIMAX ZEN™</b>	<b>0.60%</b>
C	<b>CODIAVELANE™ BG PF</b>	<b>2.00%</b>
	Preservative	0.50%
	Pentylene Glycol	5.00%
D	Titanium Dioxide - Zea Mays (Corn) Starch - Mannitol - Microcrystalline Cellulose - Iron Oxides (C.I 77492) - Iron Oxides (C.I 77491) - Hydrogenated Lecithin - Iron Oxides (C.I 77499)	2.00%
	Mannitol - Iron Oxides (C.I 77491) - Iron Oxides (C.I 77492) - Iron Oxides (C.I 77499) - Hydrogenated Lecithin - Titanium Dioxide Aluminium Dioxide - Polymethyl Methacrylate	0.50%



**Texture | A transparent gel with suspended coloured capsules that break during application and leave a comfortable tinted veil onto skin.**

- **SEPIMAX ZEN™** creates a transparent gel & allows the suspension of different capsules containing pigments. It brings an optimum playtime during application & leaves a veil supporting tint lasting.

SAMPLES available



# Neo Ecology

The ocean is a place to protect. But this vast ecosystem has triggered awareness alternative ways of sourcing, production and consumption.

By thinking about a smarter way to source from the ocean - either eco-designed or alternative ways - this concept invites to explore a new ecology where sustainability and efficiency go together.



CARING OF THE ENVIRONMENT

UPCYCLING



REDUCED FOOTPRINT



SMART SOURCING

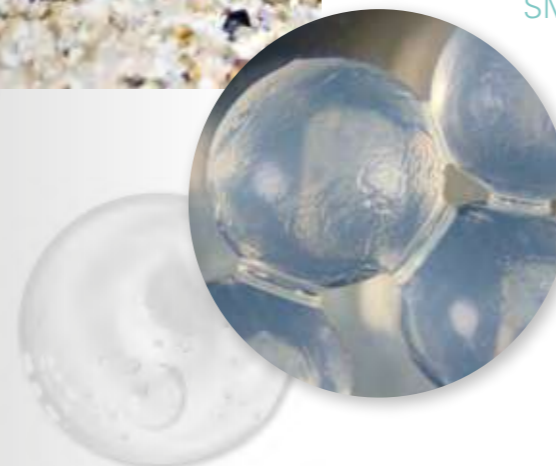


SUSTAINABLE EFFICACY

- Strike a balance between sustainability and efficiency
- Look at alternative solutions for the sake of the environment (upcycling, biotechnologies...)
- Highlight the reduced impact of ingredients on environment
- Back product results with scientific claims of efficiency
- Design multi-applications and multi-benefits products for a smarter consumption



"PEACE-SKIPPER"



## ABOUT CELTOSOME™ TECHNOLOGY

• Allows the cultivation of dedifferentiated cells of maritime plants in laboratory from only a small piece of the plant (seed, leaves, ...) in order to offer sustainable active ingredients.

• **Dedifferentiated plant cells** are “native cells” that can **renew themselves** and **can turn into different cell types**, thus being responsible for the organ differentiation of the plant and its growth. They simultaneously manage the **primary** (necessary for essential functions) and **secondary** (necessary for adaptation to external stress) **metabolisms**, generating each specific molecules.

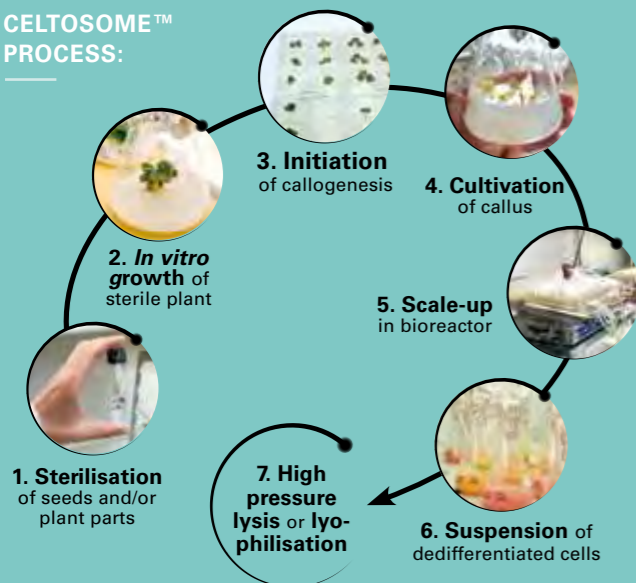
### Benefits of the technology:

A sustainable process which aims to collect small part of the plant without any cultivation surface.

- High quantity of lab-engineered botanical cells in a controlled and sterile environment.

Each undifferentiated cell potentially contains all of the plant's components!

### CELTOSOME™ PROCESS:



### HYDRALIXIR™ LD

Is **cellular water** of the *Laminaria digitata* seaweed.

This brown macroalga is **naturally filled with water**, which ensures the functionality of its mucilage and gives **elasticity and resistance** to the seaweed to face ocean currents. The **organic** seaweed is **sustainably harvested at its peak of the water level**, when the mucilage production is the highest, from April to November.

Cellular water is **obtained with an energy-efficient process**, as a **by-product** of different industries. A smart alternative to fresh water that helps to **reduce the water footprint** of cosmetics!

Water | Upcycled water



### CELTOSOME™ CRITHMUM MARITIMUM



Is a **pure cells powder** from *Crithmum maritimum* plant, also called *Sea fennel*.

It acts on the **prevention** of skin aging and cutaneous pigmentation, for a **more radiant skin**.

**More than 1 billion cells/gram of active ingredient!**

— Face care | Lightening, Moisturizing

### CELTOSOME™ ERYNGIUM MARITIMUM



Is **pure Eryngium maritimum** plant cells.

It acts on **multiple factors of skin aging** and helps to improve the firmness of the skin and a full skin renewal.

Also known as the *Sea holly*, this halophytic plant is protected in Brittany.

**More than 100 million cells/gram of active ingredient!**

— Face care | Firming

### HYDRACHRYSUM™



Is a **lysate** of *Helichrysum stoechas* plant cells.

It ensures **intense and long-term hydration** by increasing the number of *lacunae* in the epidermis, and **breaks the vicious cycle of Inflamm'dryness™**.

Also known as the *Everlasting plant*, this maritime plant grows on Brittany coasts and is protected.

**More than 1 million of lysed cells/gram of active ingredient!**

— Face care | Moisturizing

## OCEAN GEL MASK

A bright blue mask that brightens and moisturizes, like a refreshing wave of hydration for your skin!

Composition of the formula (ref.: US20048A)

A	Aqua/Water	81.80%
	<b>AQUAXYL™</b>	<b>1.50%</b>
	Methylpropanediol	8.00%
B	<b>SEPIMAX ZEN™</b>	<b>1.00%</b>
	<b>SEPI NOV™ EMT 10</b>	<b>1.00%</b>
C	<b>EMOGREEN™ L15</b>	<b>1.00%</b>
	Dimethicone 100cSt	1.00%
D	<b>SEASHINE™</b>	<b>1.00%</b>
	<b>CODIAVELANE™ BG PF</b>	<b>2.00%</b>
	<b>CELTOSOME™ CRITHMUM MARITIMUM</b>	<b>0.10%</b>
	Preservative	0.20%
	Parfum/Fragrance "Cucumber"	0.20%
	Mica - Stearoyl Glutamic Acid	
	FD&C Blue No.1 solution 0.1% w/w	0.20%



SAMPLES available

**Texture** | A light cream gel with a fresh and gliding sensation.

• **EMOGREEN™ L15** is a non polar high purity vegetable alternative to volatile silicone oils, it is a biodegradable and bio-sourced emollient and is conformed to Cosmos and Natrue.

## FRESH MELTING SERUM

A 97.7%\* of natural ingredients and minimalist face serum, with potent and pure plant cells

Composition of the formula (ref.: EU07435)

A	<b>SIMULGEL™ NS</b>	<b>2.35%</b>
B	Aqua/Water	Up to 100%
C	<b>EMOGREEN™ L15</b>	<b>5.00%</b>
	<b>CELTOSOME™ CRITHMUM MARITIMUM</b>	<b>0.10%</b>
	<b>CELTOSOME™ ERYNGIUM MARITIMUM</b>	<b>0.05%</b>
	<b>JUVENESSENCE™</b>	<b>1.00%</b>
D	Preservative	1.00%
	Parfum/Fragrance	0.20%
	Triethanolamine 6%	0.14%



**Texture** | A minimalist cream gel with a fresh, light and aqueous skin feel that melts onto the skin thanks to a unique polymer.

• **SIMULGEL™ NS** provides a sensation of freshness followed by a melting effect on the skin (velvety softness feeling).

## WASTE LESS LOTION

A lotion with ingredients obtained from smart sourcing for multiple applications, combining efficiency and sensoriality

Composition of the formula (ref.: EU07604)

A	<b>MONTANOV™ 202</b>	<b>2.00%</b>
	<b>LANOL 2681</b>	<b>7.50%</b>
	<b>EMOGREEN™ L15</b>	<b>7.50%</b>
B	<b>SOLAGUM™ AX</b>	<b>1.00%</b>
	<b>SOLAGUM™ TARA</b>	<b>0.10%</b>
C	Aqua/Water	Up to 100%
D	<b>HYDRALIXIR™ LD</b>	<b>5.00%</b>
E	Preservative	1.00%
	<b>HYDRACHRYSUM™</b>	<b>1.00%</b>
	Aqua/Water	5.00%
	<b>SEPIFINE™ BB</b>	<b>1.00%</b>
	Parfum/Fragrance	0.05%



SAMPLES available

**Texture** | An oil-in-water lotion, developed according to COSMOS NATURAL standards, with **sustainable and at the same time sensorial ingredients!**

• **SEPIFINE™ BB** is a texturizing powder sourced from the mesocarp of *Babassu nut*, a by-product of kernel and shell, for a zero waste approach. It provides a soft and velvety skin finish while creating a pleasant playtime.  
• The association with **MONTANOV™ 202** gives a unique gliding sensation and a powdery and soft finish in a formulation.



# The Scientist

## DIVER

Archetype ..... p.31

UNDERWATER FANTASIA ..... p.32

FUTURA SEAWEED ..... p.36



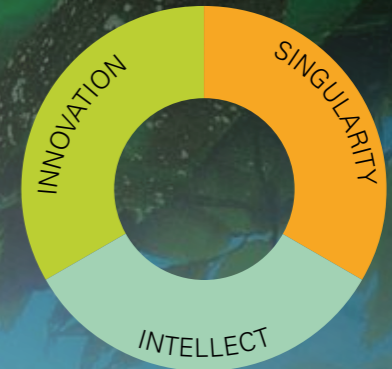
### Archetype

*Driven by the major trend of super living, meaning the connection to science and technology that pushes the boundaries of possibility.*

### PROFILE

Aspiration to an **ambitious** and **creative** lifestyle.

Love to **experiment** and to be transported into new worlds with an **intellect** dose of **boldness** and **inventiveness**.



### BEAUTY MOTIVATIONS



• BREAKTHROUGH APPROACH



• AUGMENTED BEAUTY

• BIO-ENGINEERING SOLUTIONS

• LAB-BORN INGREDIENTS

• ASTONISHING TEXTURES

*From the unknown or the inaccessible marine species and empowered by science and biotechnology, Blue Ingredients are a pledge of augmented beauty.*



# Underwater Fantasia

The challenge of biomimicry is to create products by mimicking nature's functions. Exploring sea fauna and flora with this approach allows to reveal unexpected mechanisms and molecules of interest for the cosmetic industry.

As consumers expect both efficient and surprising cosmetics, this concept invites to explore the mysteries of the ocean.



BLUE SCIENCE



ENIGMATIC SEA LIFE



EXPLORATORY DIVING



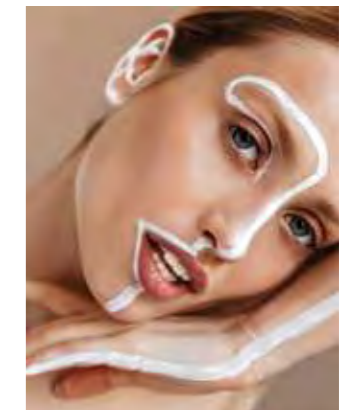
PHYTOPLANKTON

- Invent an immersive and strange ultra-sensorial universe for skincare
- Look at blue ingredients designed with a bio-inspiration or biomimicry approach
- Emphasize innovative modes of action to take care of skin
- Elaborate astonishing, "optical illusion" and "wow" textures inspired by the ocean

EXTRA-ORDINARY SEaweEDS



MARINE BIOMIMICRY



CURIOUS SENSORIALITY



# Underwater Fantasia / Inspiring formulas

## I COSMOS SKIN BLISS

### ASPAR'AGE™

Is an extract of *Asparagopsis armata*, a red seaweed also known as *Harpoon weed*.

In the ocean, some animal species communicate with each other through the release of **chemical compounds found in seaweed** they feed on. Sea Hare warns of a danger associated with the release of a very low concentration of specific molecules, **mycosporine-like amino acids**, found in *Asparagopsis armata*.

With an approach of **biomimicry**, the composition of ASPAR'AGE™ is standardized in mycosporine-like amino acids. It **regulates contagious aging**: the phenomenon of aging due to the communication from senescent to young cells through the release of many molecules.

— Face Care | Anti-aging

A 98.6%\* of natural ingredients multi purpose cream, that evolves from thick to aqueous and enriched with an ingredient inspired by marine biomimicry.



Composition of the formula (ref.: EU07725)

A	Aqua/Water	Up to 100%
	<b>SOLAGUM™ TARA</b>	<b>0.25%</b>
	<b>SOLAGUM™ AX</b>	<b>0.75%</b>
	<b>ASPAR'AGE™</b>	<b>2.00%</b>
	<b>AQUAXYL™</b>	<b>3.00%</b>
	Preservative	1.00%
	Colourant	0.037%



**Texture | A gel-in-oil emulsion** obtained thanks to the patented **GELTRAP™** technology.

• **GELTRAP™** is a technology for producing gel-in-oil emulsions, with a water-rich gelled internal aqueous phase radically different from traditional emulsion. The emulsion obtained brings sensations of wellness and has anti-dehydrating and emollient properties. Its process of obtention helps to save energy. • The combination of **FLUIDANOV™ 20X**, **SOLAGUM™ TARA** and **SOLAGUM™ AX** creates this surprising texture with a high level of naturality.

B	<b>FLUIDANOV™ 20X</b>	<b>3.00%</b>
	Polyglyceryl-3 diisostearate	2.00%
	<b>LANOL 2681</b>	<b>3.00%</b>
	<b>ANTILEUKINE 6™</b>	<b>2.00%</b>
	Parfum/Fragrance	0.06%

## I ALGAE SPAGHETTI MAKE UP REMOVER

### JUVENESSENCE™

Is an extract of *Alaria esculenta*, also known as Arctic kelp.

It **downregulates the progerin** of mature skin and assures a detoxifying action. It **improves skin elasticity and firmness**.

The seaweed is very long as it can grow up to 2 meters long. It can live in very wavy conditions without breaking thanks to its network of elastic fibers, composed of proteins and phycopolysaccharides.

— Face Care | Firmness

A biphasic make-up remover with a fun spaghetti shape inspired by seaweeds to cleanse skin and bring freshness and vitality



Composition of the formula (ref.: EU07385)

<b>ALGAE GEL</b>		
A	Aqua/Water	Up to 100%
	Agar	0.40%
	<b>SEPINOV™ EMT 10</b>	<b>0.40%</b>
	<b>SOLAGUM™ TARA</b>	<b>0.65%</b>
	Colourant	0.32%



**Texture | A biphasic gel.**

• The texture of solid, elastic and stable jellified spaghetti is obtained thanks to **SOLAGUM™ TARA** and **Agar**. • **SEPINOV™ EMT 10** helps in the formation of a delicate extra light milk when the product is rubbed on the moistened skin.

B	Aqua/Water - Butylene Glycol - Laminaria Saccharina Extract	1.00%
	Preservative	1.00%

**SPRAY (OILY PHASE)**

C	<b>EMOSMART™ L19</b>	<b>2.50%</b>
	<b>EMOSMART™ V21</b>	<b>2.50%</b>
	<b>JUVENESSENCE™ AD</b>	<b>2.00%</b>

## I PURE CLEAR ENERGIZING SERUM

### BIOPLASMA™ BG

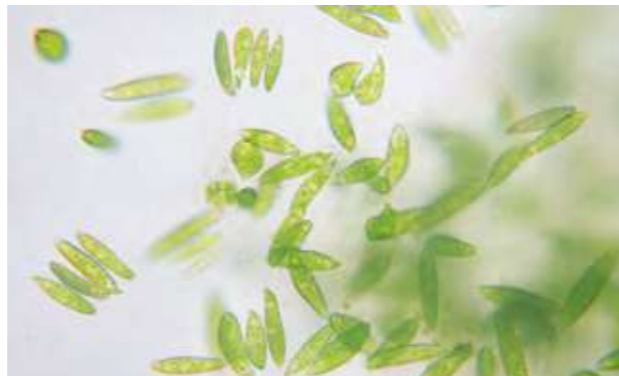
Is an extract of *Scenedesmus obliquus*, the *Sahel microalga*.

It shows **cell detoxification, anti-aging and moisturizing properties**.

The green microalga has an **original morphological and pigmentary equipment**. Thanks to its structure, when the environment is becoming dangerous, it maintains in dormancy for survival and reactivates its activity when conditions are more favorable.

— Face Care | Anti-aging, Moisturizing, Energizing

An expert care serum combining the simplicity of appearance, the technicality of texture and the efficacy of a miraculous microalga



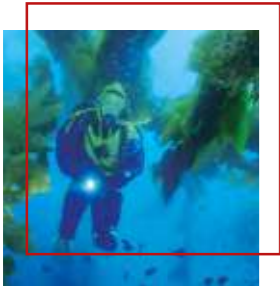
Composition of the formula (ref.: EU07409)

A	Aqua/Water	Up to 100%
	Glycerin	2.00%
-----		
B	<b>SEPIMAX ZEN™</b>	<b>0.75%</b>
	<b>SEPINOV™ EMT 10</b>	<b>0.75%</b>
-----		
C	PEG-40 stearate	1.00%
-----		
D	<b>AQUAXYL™</b>	<b>3.00%</b>
	<b>BIOPLASMA™ BG</b>	<b>1.00%</b>
	Preservative	1.00%
	Parfum/Fragrance	0.24%



**Texture | A transparent gel with a specific touch.**

• The association of **SEPIMAX ZEN™** and **SEPINOV™ EMT 10** allows the formulation of a translucent gel. • **SEPIMAX ZEN™** brings a rich, velvety and elegant skin feeling. • **SEPINOV™ EMT 10** gives a supple gel & an easy pick-up, with a satin touch and fresh glide-on.



# Futura Seaweed

Oceans host many rare resources, either ephemeral or very small species that can't be naturally accessible. However, the progress of technology allows to unlock their power in a sustainable way.

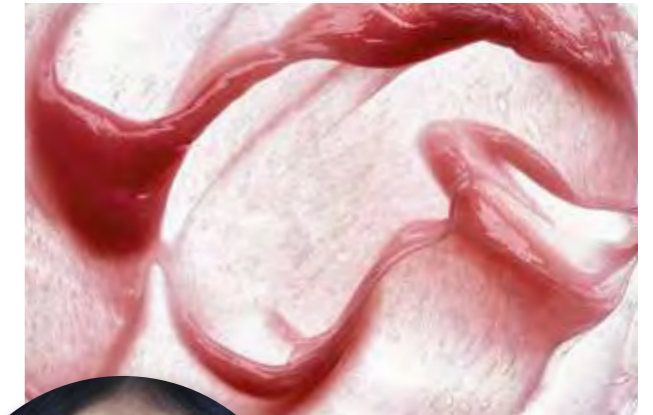
As consumers are more and more interested in sustainable technologies, this concept invites to consider blue biotechnology and the opportunities it opens for cosmetics.



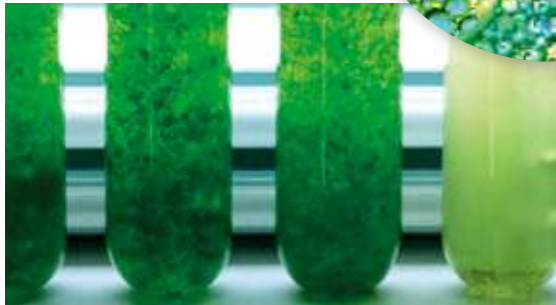
EXPERIMENTAL



UNLOCK RARE SPECIES



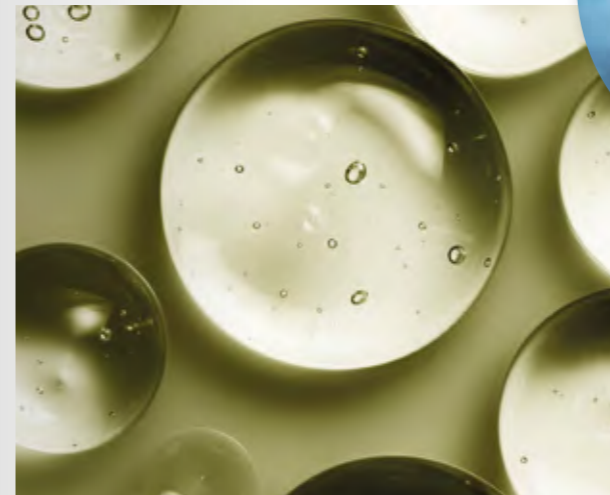
SUSTAINABLE DOSE



LAB-BORN SEAWEED



ALGAE PERFORMANCE IN JAR



BLUE BIOTECHNOLOGY



- Harness biotechnologies to inspire efficient and eco-responsible beauty
- Emphasize how biology and technology give access to high-performance skin care through biotechnology
- Pick lab-engineered ingredients that allow to have industrial access to rare and non-abundant species
- Focus on an experimental product with a sensory feel (powder, cream gel)

## ABOUT CELEBRITY™ TECHNOLOGY

**CELEBRITY™** is a **biotechnology** allowing the cultivation of **microscopic macroalgae in laboratory**, in order to offer **sustainable seaweed-based active ingredients**.

### Benefits of the technology:

**A limited impact on biodiversity:** only one drop of seawater is taken off and allows to isolate many species that will be cultivated.

**Opening new possibilities:** the technology allows the high production of industrial biomass of rare and non abundant microscopic macroalgae.



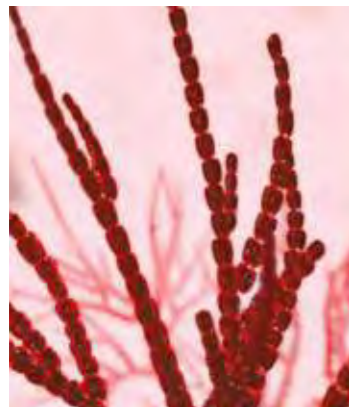
### EPHEMER™

Is an **extract of *Undaria pinnatifida* gametophytes** obtained from **CELEBRITY™ technology**.

**Gametophytes**, the **few-week ephemeral form** of the alga in its life cycle, are described in the bibliography as **richer in the antioxidant fucoxanthin** than the sporophyte.

On one hand, **EPHEMER™** has a **150 times higher fucoxanthin content** than conventional extracts of *Undaria pinnatifida*, which is also **more stable**. On the other hand, it has a **superior efficiency** in strengthening the **antioxidant capacity** of the skin, with an **innovative and systemic approach**.

Face care | Antioxidant



### CONTACTICEL™

Is an **extract of *Acrochaetium moniliforme***, a very small seaweed living on others. Due to its small size (between 60µm and 2cm) the seaweed is little known.

It was shown to **limit excessive sebum production** of skin exposed to polluted atmosphere and to **reduce the ozonolized squalene**.

It allows **skin protection against pollution** and offers **protective effects of immunity against urban dust**.

Face care | Dermopurifying

## SUSTAINABLE ANTIOXIDANT SKIN CARE

A 98%\* of natural ingredients ready-to-go comfortable care cream for face and body, enriched with sustainable and smart ingredients

Composition of the formula (ref.: EU07411)

A	Aqua/Water	Up to 100%
	Glycerin	3.00%
B	<b>MONTANOV™ 202</b>	<b>3.50%</b>
	<b>EMOGREEN™ L15</b>	<b>5.00%</b>
	Cetyl Palmitate	2.00%
	Prunus Amygdalus Dulcis (Sweet Almond) Oil	3.00%
	Caprylic/Capric Triglyceride	12.00%
C	<b>SEPLIFE™ NUDE</b>	<b>1.50%</b>
D	<b>EPHEMER™</b>	<b>1.00%</b>
	Tocopherol	0.05%
	Benzyl Alcohol - Dehydroacetic Acid	0.80%
	Parfum/Fragrance	0.10%
	Lactic Acid	Up to pH



SAMPLES available

**Texture** | An oil-in-water emulsion, bringing smart comfort care.

- **SEPLIFE™ NUDE** is a 61% of natural origin thickener. It stabilizes the emulsion and provides a gliding feeling during the application and an ultra smooth finish.
- **MONTANOV™ 202** emulsifies and promotes liquid crystals, for a long lasting skin hydration. It brings a non-greasy skin feel to the formula.

## GREEN DAILY LIGHT CREAM GEL

A lightweight and natural cream gel, with no compromise on efficacy!

Composition of the formula (ref.: US20082)

A	Aqua/Water	Up to 100%
	Preservative	1.00%
	<b>ORAMIX™ CG 110</b>	<b>0.50%</b>
	<b>CONTACTICEL™</b>	<b>1.00%</b>
B	KOH - 50% solution	Up to pH 5.0 - 5.5
C	<b>EMOGREEN™ L19</b>	<b>6.00%</b>
	Glyceryl Linoleate - Glyceryl Oleate - Glyceryl Linolenate	3.00%
	Sweet Almond Oil	3.00%
	<b>EPHEMER™</b>	<b>1.00%</b>
	Parfum/Fragrance	0.50%
D	<b>SOLAGUM™ AX</b>	<b>2.50%</b>
	Glycerin	3.00%
	<b>AQUAXYL™</b>	<b>1.50%</b>



**Texture** | A cream gel.

- **SOLAGUM™ AX** is a smart acacia-coated xanthan gum, derived from renewable and safe sources. It helps to stabilize the oily phase without any emulsifier and gives a soft non-tacky skin feel.

\*Naturality profile according to ISO 16128 norm

Samples are available upon request. See contact details on the back cover.

# A-Z Index

## Blue Ingredients

ANTILEUKINE 6™	Caprylic/Capric Triglyceride - Laminaria Ochroleuca Extract	✓	ECOCERT	EVEA	MB	✓	✓	✓	✓
AQUAXYL™	Xylitylglucoside - Anhydroxylitol - Xylitol	✓	ECOCERT	EVEA		✓	✓	✓	✓
ASPAR'AGE™	Aqua/Water - Propanediol* - Asparagopsis Armata Extract *Plant-based & Renewable	✓		EVEA	MB	✓	✓	✓	✓
CELTOSOME™ CRITHMUM MARITIMUM	Crithmum Maritimum Callus Culture Filtrate	✓	ECOCERT	EVEA		✓	✓	✓	✓
CELTOSOME™ ERYNGIUM MARITIMUM	Eryngium Maritimum Callus Culture Filtrate	✓	ECOCERT	EVEA		✓	✓	✓	✓
CODIAVELANE™ BG PF	Butylene Glycol* - Aqua/Water - Codium Tomentosum Extract *Plant-based & Renewable	✓	ECOCERT	EVEA		✓	✓	✓	✓
CONTACTICEL™	Aqua/Water - Butylene Glycol* - Hydrolyzed Rhodophyceae Extract *Plant-based & Renewable	✓	ECOCERT	EVEA		✓	✓	✓	✓
EPHEMER™	Caprylic/Capric Triglyceride - Undaria Pinnatifida Extract	✓	ECOCERT	EVEA	MB	✓	✓	✓	✓
FLAKES OF CHONDRUS CRISPUS	Chondrus Crispus Powder	✓				✓	✓	✓	✓
GULF STREAM SEA WATER™	Sea Salt	✓	ECOCERT	EVEA		✓	✓	✓	✓
HYDRACHRYSUM™	Aqua/Water - Glycerin - Helichrysum Stoechas Callus Culture Lysate			EVEA		✓	✓	✓	✓
HYDRALIXIR™ LD	Laminaria Digitata Water			EVEA		✓	✓	✓	✓
INULA HC	Caprylic/Capric Triglyceride - Inula Crithmoide Leaf/Flower Extract		ECOCERT	EVEA	MB	✓	✓	✓	✓
JUVENESSENCE™	Caprylic/Capric Triglyceride - Alaria Esculenta Extract	✓	ECOCERT	EVEA	MB	✓	✓	✓	✓
MICRO ALGUE 80	Diatomaceous Earth	✓	✓			✓	✓	✓	✓
NATIVE ESSENCE™	Caprylic/Capric Triglyceride - Crithmum Maritimum Extract	✓	ECOCERT	EVEA	MB	✓	✓	✓	✓
SCULPTOSANE™	Aqua/Water - Butylene Glycol - Plankton Extract* - Arginine Ferulate *Plankton Origin: (species) Scenedesmus Obliquus	✓				✓	✓	✓	✓
SEA SATIN™	Caprylic/Capric Triglyceride - Beta Vulgaris (Beet) Root Extract	✓	ECOCERT	EVEA	MB	✓	✓	✓	✓
SEASHINE™	Aqua/Water - Butylene Glycol* - Alaria Esculenta Extract - Undaria Pinnatifida Extract *Plant-based & Renewable	✓	✓	ECOCERT	EVEA		✓	✓	✓
SEL GRAIN™	Sea Salt	✓	✓	ECOCERT	EVEA		✓	✓	✓
SEPICALM™ VG WP	Sodium Cocoyl Amino Acids - Sarcosine - Potassium Aspartate - Magnesium Aspartate	✓			MB	✓	✓	✓	✓

LEGEND

### Function:

- Active Ingredients
- Emulsifiers
- Polymeric Thickeners & Stabilizers
- Sensory Ingredients
- Functional Additives

### Technologies:

- Polymer Science
- Plant-based Chemistry
- Marine Biotechnologies

### Regulatory / Approvals:

- CHINA Compliant:** all INCI names are listed on the 2021 IECIC list.
- QD Additive:** approved as QD additive in Japan.
- COSMOS Approved:** raw material verified by ECOCERT GREENLIFE conform to the COSMOS Standard.
- Verified by ECOCERT:** raw material verified by ECOCERT GREENLIFE, conform to the Ecocert Organic & Natural Cosmetics Standard.

## Sensorial & Functional Ingredients

EMOGREEN™ (1) HP 40	C15-19 Alkane* - Hydrogenated Polyfarnesene* *Plant-based & Renewable					✓	✓	✓	✓
EMOGREEN™ (1) L15	C15-19 Alkane* *Plant-based & Renewable	✓	✓	ECOCERT	EVEA	MB	✓	✓	✓
EMOGREEN™ (1) L19	C15-19 Alkane* *Plant-based & Renewable	✓	✓	ECOCERT	EVEA	MB	✓	✓	✓
EMOSMART™ (2) V21	C18-21 Alkane	✓					✓	✓	✓
FLUIDANOV™ 20X	Octyldodecanol - Octyldodecyl Xyloside	✓		ECOCERT	EVEA	MB	✓	✓	✓
LANOL 14 M	Myreth-3 Myristate	✓					✓	✓	✓
LANOL 2681	Coco-Caprylate/Caprato	✓		ECOCERT	EVEA	MB	✓	✓	✓
LANOL 99	Isononyl Isononanoate	✓					✓	✓	✓
LANOL P ECAILLES	Glycol Palmitate	✓				MB	✓	✓	✓
MONTANOV™ 202	Arachidyl Alcohol - Behenyl Alcohol - Arachidyl Glucoside	✓	✓	ECOCERT	EVEA		✓	✓	✓
MONTANOV™ 68 MB	Cetearyl Alcohol - Cetearyl Glucoside	✓	✓	ECOCERT	EVEA	MB	✓	✓	✓
MONTANOV™ 82	Cetearyl Alcohol - Coco-Glucoside	✓		ECOCERT	EVEA	MB	✓	✓	✓
MONTANOV™ L	C14-22 Alcohols - C12-20 Alkyl Glucoside	✓		ECOCERT	EVEA	MB	✓	✓	✓
ORAMIX™ CG 110	Caprylyl/Capryl Glucoside	✓		ECOCERT	EVEA	MB	✓	✓	✓
SEPIFINE™ BB	Amylopectin				EVEA		✓	✓	✓
SEPLIFE™ NUDE	Sodium Acrylate/Sodium Acryloyldimethyl Taurate Copolymer - C15-19 Alkane* - Polyglyceryl-6 Laurate* - Polyglycerin-6* *Plant-based & Renewable	✓				MB	✓	✓	✓
SEPIMAX ZEN™	Polyacrylate Crosspolymer-6	✓					✓	✓	✓
SEPINOV™ EMT 10	Hydroxyethyl Acrylate/Sodium Acryloyldimethyl Taurate Copolymer	✓				MB	✓	✓	✓
SEPINOV™ WEO	Hydroxyethyl Acrylate/Sodium Acryloyldimethyl Taurate Copolymer	✓					✓	✓	✓
SIMULGEL™ NS	Hydroxyethyl Acrylate/Sodium Acryloyldimethyl Taurate Copolymer - Squalane - Polysorbate 60	✓				MB	✓	✓	✓
SOLAGUM™ AX	Acacia Senegal Gum - Xanthan Gum	✓	✓	ECOCERT	EVEA		✓	✓	✓
SOLAGUM™ TARA	Caesalpinia Spinosa Gum	✓		ECOCERT	EVEA		✓	✓	✓

- NATRUE Approved:** raw material approved according to NATRUE Standard.
- MB MASSBALANCE Certified:** supplied under MassBalance certification BVC-RSPO-1-1972708497. Contributes to the production of certified sustainable palm oil.

- HALAL Certified:** raw material certified by HCS organism, officially recognized by the highest Halal authorities including MUI (Indonesia), JAKIM (Malaysia), MUIS (Singapore) and CICOT (Thailand).

- VEGAN Suitable:** Vegan suitability assessed according to Seppic Vegan criteria.

- NATURALITY Profile:** naturality profile according to ISO 16128 norm, is available upon request (NOC: Natural Origin Content).

NOC >50%  
NOC >50%  
NOC =100%



*We were pleased to dive with you  
in the magical world of*  
**Blue Ingredients**

**Nota:**

The analytical specifications warranted are only those mentioned on the certificate of analysis supplied with each delivery of the product. Except as set forth above, Seppic\* makes no warranties, whether express, implied or statutory, as to the product which is the subject of this document. Without limiting the generality of the foregoing, Seppic\* makes no warranty of merchantability of the product or of the fitness of the product for any particular purpose. Buyer assumes all risk and liability resulting from the use or sale of the product, whether singly or in combination with other goods. The information set forth herein is furnished free of charge and is based on technical data that Seppic\* believes to be reliable. It is intended for use by persons having technical skill and at their own discretion and risk. Since conditions of use are outside Seppic\*'s control, Seppic\* makes no warranties, express or implied, and assumes no liability in connection with any use of this information. Nothing herein is to be taken as a license to operate under or a recommendation to infringe any patents.

\*Seppic being:

**Seppic S.A. - Paris**

FRANCE  
Tel.: +33 (0)1 42 91 40 00  
info.seppic@airliquide.com

**Seppic S.A. - Castres**

FRANCE  
Tel.: +33 (0)5 63 72 69 69  
Fax: +33 (0)5 63 72 69 70

**Seppic S.A. - Pontrioux**

FRANCE  
Tel.: +33 (0)2 96 95 31 32  
contact.biotechmarine@airliquide.com

**Seppic S.A. - Lons**

FRANCE  
Tel.: + 33 (0)5 59 13 04 20  
contact-serdex@airliquide.com

**Seppic S.A. - Villers-sur-Fère**

FRANCE  
Tel.: +33 (0)1 42 91 40 00  
info.seppic@airliquide.com

**UNITED STATES - Seppic Inc.**

UNITED STATES  
Tel.: +1 973 882 5597  
us.seppic@airliquide.com

**UNITED STATES - Polykon  
Manufacturing LLC**

UNITED STATES  
Tel.: +1 804 624 9057  
sharon.harper@airliquide.com

**BRASIL - Seppic Brasil EQCl Ltda**

BRASIL  
Tel.: +55 11 3252 3911  
brasil.seppic@airliquide.com

**COLOMBIA - Seppic  
Colombia SAS**

COLOMBIA  
Tel.: +571 702 44 48  
colombia.seppic@airliquide.com

**GERMANY - Seppic GmbH**

GERMANY  
Tel.: +49 (0)221 888824 0  
germany.seppic@airliquide.com

**ITALY - Seppic Italia Srl**

ITALY  
Tel.: +39 02 38009110  
italy.seppic@airliquide.com

**POLAND - Seppic Office**

POLAND  
Tel.: +48 22 11 60 759  
poland.seppic@airliquide.com

**RUSSIA - Seppic Office**

RUSSIA  
Tel.: +7 495 641 28 98 ext. 375

**CHINA - Seppic Shanghai  
Chemical Specialities Co.**

CHINA  
Tel.: +86 (21) 64 66 01 49  
china.seppic@airliquide.com

**INDIA - Air Liquide India  
Holding Pvt Ltd**

INDIA  
Tel.: + 91 22 61046464  
india.seppic@airliquide.com

**SINGAPORE - Seppic Office**

SINGAPORE  
Tel.: +65 6378 5213  
singapore.seppic@airliquide.com

**JAPAN - Seppic Office**

JAPAN  
Tel.: +81 3 6414 6725  
japan.seppic@airliquide.com

**KOREA - Seppic Office**

Seoul, KOREA 06168  
Tel.: +82-2-3019-2569  
korea.seppic@airliquide.com

© 2022 Seppic

Seppic is a subsidiary  
of the AIR LIQUIDE group



seppic.com